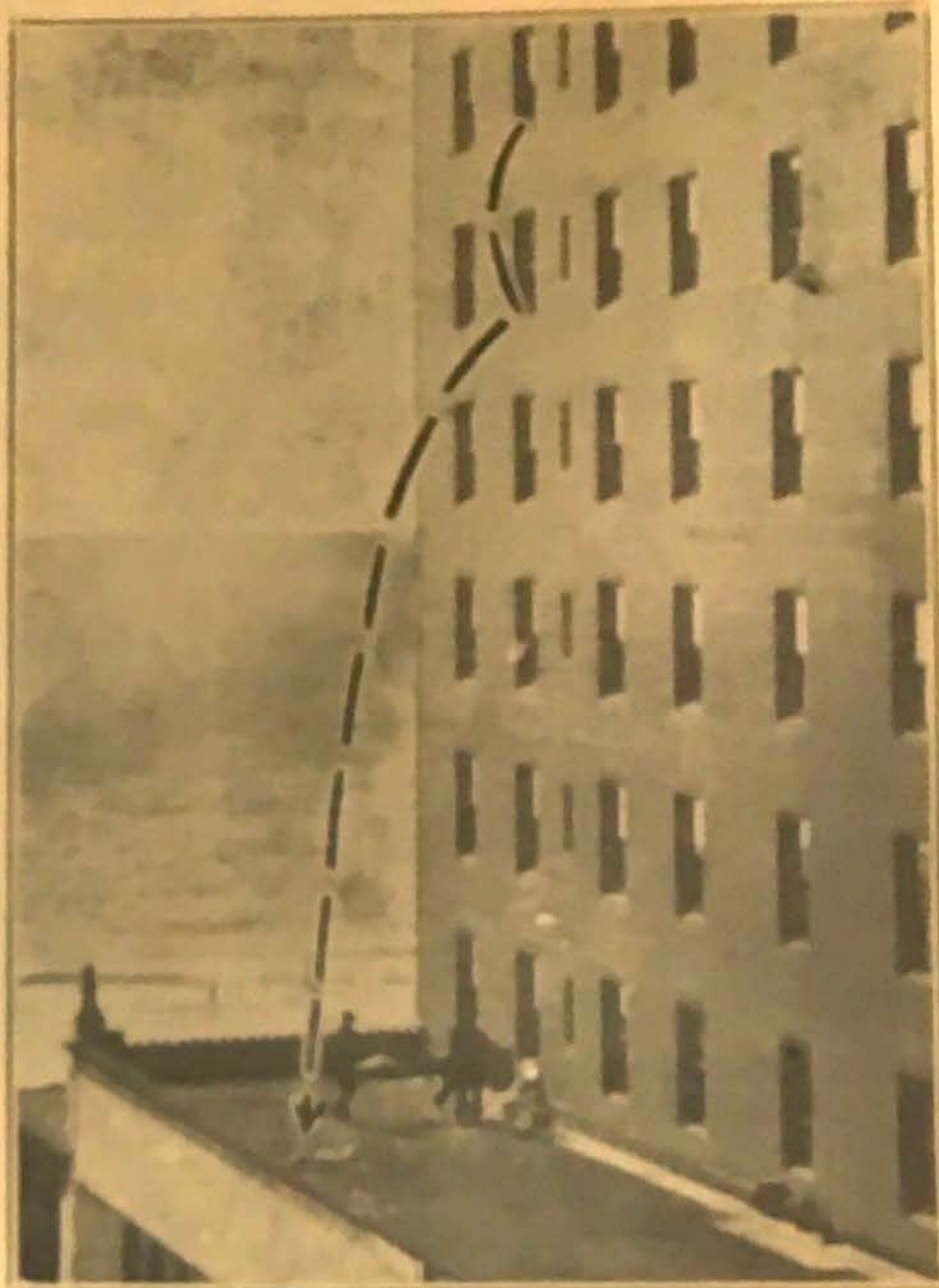
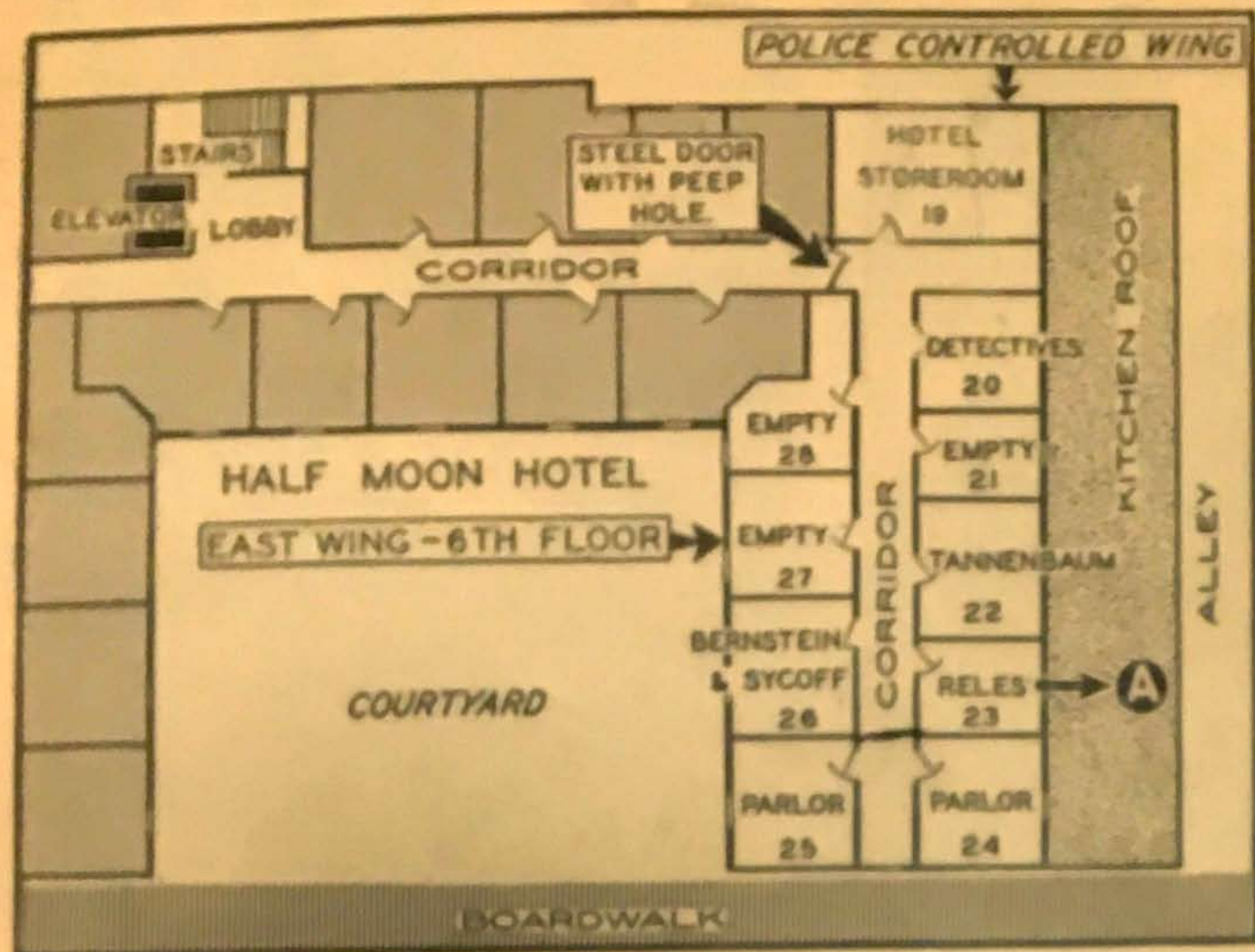


OR WAS HE PUSHED?



(Floor Plan by Staff Artist Refused)

Song's End

Especially-prepared diagram (A) reveals location of "equal-ers' suite" in Half Moon Hotel and shows where everybody was supposed to be at time Reles plunged to death from sixth-

ing to his testimony in a departmental trial which followed, Doyle was "looking in" the room Reles had occupied shortly before. It was about 7:15 A. M. When he saw Reles gone and the window open, he looked down to the roof, 27 feet below.

Reles' body lay there, with a

who had been or were to be executed because Kid Twist sang, also understood Reles.

Nobody who ever knew him could believe, however, that Abe wanted to escape from that hotel. And those who knew him best laughed at the notion that he would try to